



In this issue:



New Municipal Facility
in Gulfport, Mississippi

Page 2



Harper-McCaughan Elementary
School in Long Beach,
Mississippi

Page 2



Four Engineers Join the
SDA Team

Page 3



Photo of the Month:
Resolving Conflict at
SDA

Page 4



Pall Corporation expands its Membrane Manufacturing Facility:

Headquartered in East Hills, New York, Pall Corporation is the world's largest manufacturer of filtration and purification devices for biomedicine, military applications, and industrial water systems. Pall's Pensacola, Florida plant serves as the corporation's lead producer of "Life Science" grade membranes and currently employs approximately 200 scientists and skilled technicians for this purpose.

Schmidt Dell Associates, Inc. is currently serving as the prime design consultant for Pall Corporation's \$11 million Manufacturing Area Expansion project. The 40,000 square foot expansion will create room for Pall's membrane manufacturing facility and add 50 new jobs.

Schmidt Dell Associates, Inc. began its relationship with Pall Corporation in 2000 and has since provided design services for over 50 projects at the Pensacola plant. Our firm is providing Structural, Mechanical, Electrical, Plumbing, Fire Protection, and Communications design and construction administration for the expansion. Gulf Coast Architectural Group and Ken Horne and Associates, Inc. (Civil Engineer) completed the design team for this project which has an estimated construction completion date of mid-2009.

Gulfport Municipal Facility



Rendering Courtesy of
Guild Hardy Architects, P.A.

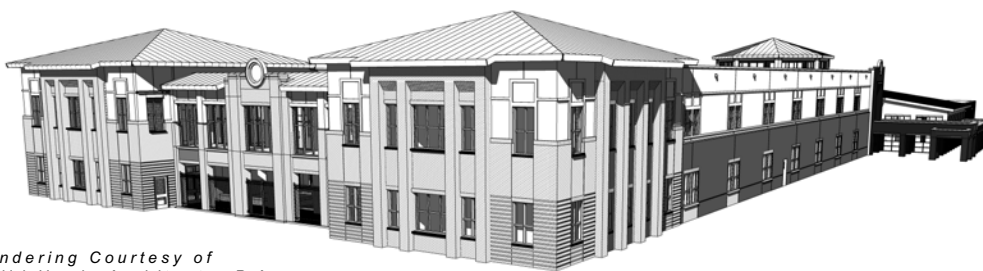
Gulfport prepares for a new Municipal Facility: Schmidt Dell Associates, Inc., alongside Guild Hardy Architects, P.A., is providing Mechanical, Electrical, Plumbing, Communications, and Structural design services for a two-phased, three-story new Municipal Facility to be located in downtown Gulfport, Mississippi. The project is in response to the revitalization efforts of the Gulfport Main Street Association and is designed to support 25 year growth projections.

Phase I of this project includes a 57,000 square foot Police Headquarters and Municipal Courts Facility. The Police Headquarters will include the following: public/reception/access areas; administrative areas; the Office of the Chief; an Operations and Criminal Investigations Division; a Narcotics Division; Patrol and Traffic Operations; a Records Management Division; a Support Services Division; an Evidence Division; Information Technology; facility functional areas; facility service areas; a training center; and Information Services. The Municipal Courts Facility will include a public lobby, security, a trial courtroom, an arraignment courtroom, judicial chambers, conference rooms, and work areas.

Phase II of this project will include approximately 50,000 square feet of municipal services space including the following departments: Purchasing, Information Services, GIS, General Finance, Civil Service, Administrative Finance, Leisure Service, Urban Development, Courts and Court Administration, Human Resources, City Council, Utility Billing, and the City Clerk.

This facility is designed as a first responders' shelter to the standards of FEMA 361. The construction cost of this project is approximately \$20 million and the project is scheduled to bid in the fourth quarter of 2008.

Harper-McCaughan Elementary



Rendering Courtesy of
Guild Hardy Architects, P.A.

The Long Beach School District rebuilds after Katrina: Schmidt Dell Associates, Inc., teamed with Guild Hardy Architects, P.A., to provide Structural design services for the new Harper-McCaughan Elementary School located in Long Beach, Mississippi. The work at Harper-McCaughan Elementary will be primarily funded by FEMA, replacing the school damaged by Hurricane Katrina.

The Harper-McCaughan Elementary School is approximately 85,000 square feet with capacity for nearly 800 students. The Long Beach School District sought a design team to establish a new standard for quality, character, educational technology, and sustainability for the School. This standard will serve as a template for the new Middle School, High School, and Athletic Fields to be built on the school's campus.

The school is located on a prominent street in Long Beach and will present a bold public facade consisting of a gated courtyard flanked on each side by classroom towers. An enclosed walkway at the second floor connects the two classroom towers and overlooks the courtyard. The Architect's intention is to create an open feeling at the school's entry; a Commons Lobby, onto which the other spaces open. A two-story atrium with high clerestory windows accentuates the open quality of this gathering space. GHA strived to create this feeling of openness by layering the spaces, which creates a visual connection and a sense of transparency from one space to the next throughout the school.

Construction for the school is estimated to be completed by the beginning of the 2009-2010 school year.

Four Engineers Join the SDA Team:



Schmidt Dell Associates, Inc. is continuously growing. We currently employ 40 full-time engineers, technicians, and administrative staff including six registered mechanical engineers, three registered electrical engineers, three registered structural engineers, three registered communications distribution designers (RCDD), one graduate mechanical engineer, two graduate electrical engineers, two graduate structural engineers, two Certified Plumbing Designer, six engineering designers, drafting support (6), one construction inspector, one project coordinator, and administrative support (5). **We are proud to announce the arrival of Eric J. Hutchens, P.E., Eric D. Eldridge, P.E., Roger Smith, P.E., and Andy Maurin, P.E. to our team.**



Eric J. Hutchens, P.E.: Eric has joined the Structural Team at our Pensacola, Florida office. Eric received his Master of Science degree in Structural Engineering from the University of Nevada in 1994 and has over 14 years of experience as a Structural Engineer. He has extensive design experience primarily in structural steel, cast-in-place reinforced concrete, precast/prestressed concrete, masonry and wood building systems.

Eric has provided design and construction administration for a variety of facility types including schools, hospitals, office buildings, religious facilities and military support facilities. He has served as project manager for projects ranging from a \$400,000 single-story restaurant to a \$300,000,000 8-story hospital complex.



Eric D. Eldridge, P.E., LEED AP: Eric has joined the Mechanical Team at our St. Petersburg, Florida office. Eric received his Bachelor of Science degree in Mechanical Engineering from San Diego State University in 1996 and has over 7 years of experience as a Mechanical Engineer. He has extensive experience in HVAC design.

Eric has provided design and construction administration for a variety of facility types including schools, municipal facilities, correctional facilities, religious facilities and dormitories. He has served as the head of design for projects including the new Pasco County Middle School 'FF', the Eckerd College Zeta Dormitory Renovation, and the City of St. Petersburg Fire Headquarters Renovation.



Roger Smith, P.E.: Roger has joined the Mechanical Team at our Daphne, Alabama office. Roger received his Bachelor of Science degree in Mechanical Engineering from the University of South Alabama and has over 25 years of experience as a Mechanical Engineer, as well as experience as an estimator and project superintendent for four mechanical contractors in Mobile.

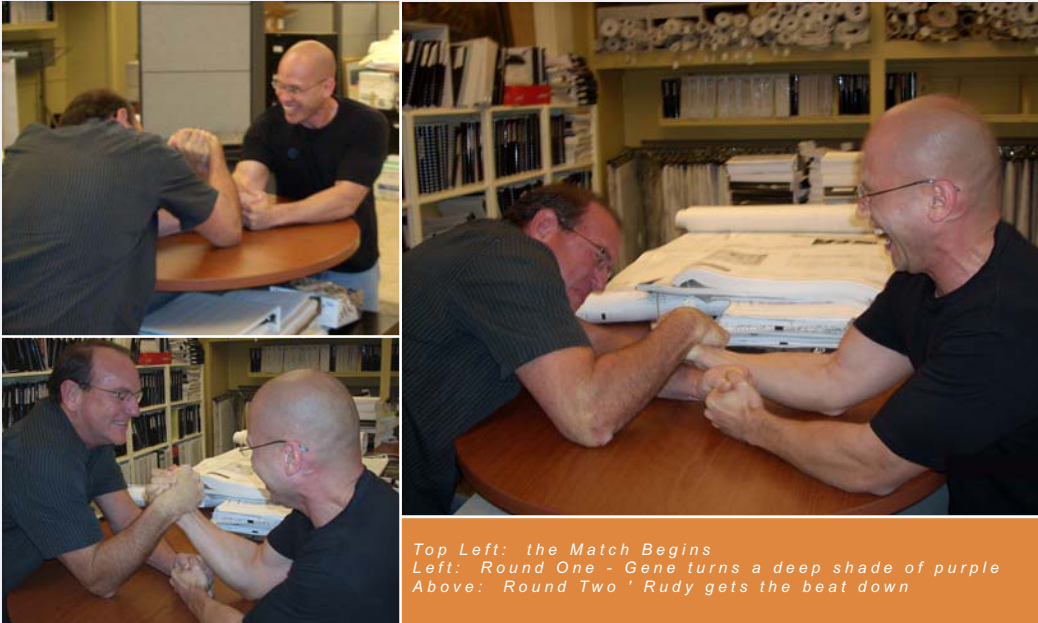
For the past 12 years, Roger has designed HVAC and plumbing systems for a variety of facility types including commercial; military readiness; cyclotron; college housing and educational; assisted living; multi-family residential; financial; telecommunications; community sports complexes; and healthcare facilities including MRI and CT suites, hospital operating and emergency rooms. He has also provided mechanical design services for LEED certified buildings.



Andy Maurin, P.E.: Andy has joined the Electrical Team at our Daphne, Alabama office. Andy received his Bachelor of Science degree in Electrical Engineering from the University of South Alabama and has over 25 years of experience as an Electrical Engineer, as well as experience as a Field Service Engineer and subsequently Service Manager for General Electric Medical Systems.

For the past 11 years, Andy has provided Electrical design and construction management for a variety of projects including the Mobile Alabama Cruise Terminal, the University of South Alabama Student Services Building, many Mobile and Baldwin County School projects, sports complexes, long term care facilities, medical imaging suites, data centers, office buildings, emergency shelters, condominiums, motels, dormitories and other commercial facilities.

Photos of the Month



*Top Left: the Match Begins
Left: Round One - Gene turns a deep shade of purple
Above: Round Two ' Rudy gets the beat down*

Resolving Conflict at SDA:

Sometimes words just aren't enough - it takes muscle to prove who's boss at SDA. It all started with a friendly punch in Rudy Enumerables' shoulder...but ended in an arm wrestling match in the plan room between Rudy and Gene Schmidt.

Gene won the first round, although Rudy notes that Gene turned a shade of purple which caused him to lose concentration, laugh a little too hard, and subsequently be beaten down. After round one, Rudy offered up excuse number three: that his arms were sore from a work-out at the gym the night before. Gene put Rudy's excuses to the test and allowed a rematch. Sadly for Rudy, Gene proved the victor yet again, proving that he is, in fact, the boss of SDA.

About Us: Schmidt Dell Associates, Inc. was established in 1987 to provide Mechanical, Plumbing, Electrical, Telecommunications, and Structural design services to a very diverse client base.

Headquartered in Pensacola, Florida, SDA currently employs branch offices in St. Petersburg, Florida and Daphne, Alabama to serve our clients more effectively and efficiently.

Our range of consulting services includes planning, design, the production of construction documents, supervision of public bidding, contract administration, and supervision and inspection during construction.

Our reputation for quality, responsiveness, and timeliness has been demonstrated through successful projects for many private, federal, state, and local entities.

Schmidt Dell Associates, Inc. has provided specialized design solutions for a variety of facility types including: Airports, Auditoriums, Broadcast Studios, Churches, Colleges and Universities, Correctional Facilities, Data Centers, K-12 Schools, Hospitals and Healthcare Facilities, Industrial Complexes, Laboratories, Libraries, Military Facilities, Multi-Family Residential Units, Municipal Facilities, Museums and Performing Art Centers, Office Buildings, Recreational Facilities, Sport Complexes, and Wastewater Treatment Plants.



Locations:

Pensacola Office:
139 East Government Street
Pensacola, FL 32502
P: 850-438-0050 | F: 850-432-8631

St. Petersburg Office:
2111 Dr. Martin Luther King Jr. Street N.
St. Petersburg, FL 33704
P: 727-822-6286 | F: 727-822-6280

Daphne Office:
29000 Highway 98 | Building A, Suite 201
Daphne, AL 36526
P: 251-625-3003 | F: 251-625-3020

www.sdace.com