

# Saraland High School

*Rendering Courtesy of  
The Architects Group*



## In this issue:



LEED 2009 and a new  
LEED A.P. Associate

Page 2



Milk n' Honey's annual  
Summer Camp becomes  
a reality

Page 2



A new name with a  
renewed commitment

Page 3

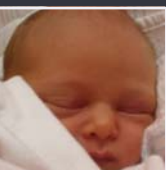


Photo of the Month:  
Michelle's a Mommie

Page 4

## The Saraland Board of Education prepares for their first school:

In June 2006, Saraland, Alabama residents voted, by an overwhelming 70%, to separate from the Mobile County Public School System in order to form their own school district. They also voted that the new district which would be funded by a half-cent sales tax rate increase. The Saraland Board of Education was formed on September 15, 2006 and a separation agreement between the two systems was finalized in October 2007. The Saraland City School System received U.S. Department of Justice Pre-Clearance on January 7, 2008 - the final step in its formation.

Saraland High School will be the first school for this newly formed district. Schmidt Consulting Group, Inc., alongside The Architects Group (TAG) and Volkert and Associates (Architect/Engineer), is providing Mechanical, Electrical, Plumbing, and Communications design services for the project. The new school will span 157,899 square feet and contain 43 classrooms with a two-story classroom wing; full kitchen and dining facilities; two gymnasiums; a weight room; band/choir rooms; and a theater/auditorium.

## LEED 2009



**Another LEED A.P. Associate:** Jason A. Majerus, P.E. recently passed his LEED A.P. exam. Jason has provided design services for several projects that are seeking LEED Certification and recognized the significance of gaining this accreditation.

Jason joined SCG over five years ago and is currently working in our St. Petersburg office. He has over seven years experience as a mechanical engineer, primarily in HVAC, fire protection, and plumbing design. Specialties include indoor air quality investigations and remediation. System design and construction administration experience includes chilled and hot water, geothermal, and various forms of energy recovery and conventional DX systems.

**The USGBC looks toward the future:** USGBC's evolution of the LEED Green Building Rating System is a multi-faceted initiative to streamline and create capacity for LEED project execution, documentation and certification. On May 1st, the USGBC released a memorandum which identified key advancements that exist under the upcoming LEED 2009. Two areas of interest lie in the new provisions for Regionalization and Exemplary Performance credits:

**Regionalization:** In response to market desire, the LEED Steering Committee has created a structure that allows for regional bonus credits in LEED. As a first step, incentives will be provided through LEED Innovation and Design style bonus points that will add value to those credits that are considered most important for defined regions. These points will be counted in the same way as LEED ID points and are not included in the certification threshold calculations (ID and regional points count towards a project's certification tally but they are not 'base' points on which certified, silver, gold and platinum thresholds are established). Project teams may select bonus points from a list of eligible credits based on the project's location. The LEED Steering Committee is currently collaborating with Regional Councils and Chapters to create a list of eligible credits. As defined by these Regional Councils and Chapters, select credits from the available list will be eligible for bonus points in appropriate sub-regions.

**Exemplary Performance:** Currently in LEED, projects can earn up to 4 points for exemplary performance under IDc1: Innovation in Design. Exemplary Performance points are granted to projects that can demonstrate a doubling and/or attainment of the next incremental percentage threshold beyond the requirements of a LEED credit. Credit can also be earned under IDc1 for employing innovative strategies in building design, construction or operation. In an effort to encourage more innovation in LEED projects, the LEED Steering Committee voted to grant a maximum of 3 points for exemplary performance. This step was taken in order to return to the original intent of the credit, to encourage projects to pursue innovation in green building.

## Summer Camp



**Milk n' Honey reaches its goal for its summer camp program:** Sonya Culliver, Milk n' Honey Outreach Ministries' founder, came to Schmidt Consulting Group, Inc. looking for partners to help raise the \$20,000 necessary to run their annual summer camp program for 50 kids, ages 5 to 16. SCG committed to raising the full amount and through the help of our community was able to achieve this goal. It was the support of Sam Marshall Architects, Bullock-Tice Architects, and STOA Architects that allowed us to secure the necessary funding.

Milk n' Honey Outreach Ministries is a community-based, non-profit organization that provides early intervention programs for at-risk children and youth in Pensacola, Florida's inner city. The organization is dedicated to enhancing their youth's academic performance. This year's summer camp will provide certified teachers to assist those youth having academic difficulties - a first for the organization. Youth will also participate in a summer reading program; a community service project with Manna Food Bank; art, music, and multimedia classes; as well as a number of recreational activities.

*Milk n' Honey, like many non-profit organizations, never has enough money, time, or people-power to facilitate their programs. If you would like to support this organization, please visit their website at <http://www.milkandhoneyoutreach.org>. or contact Sonya Culliver at 850-469-8788.*



## SCG, Inc.

**A new name with a renewed commitment:** The engineering firm that you have known as Schmidt Dell Associates, Inc. is now Schmidt Consulting Group, Inc. The name change is emblematic of a renewed commitment to our clients, our associates, our community and the environment.

Our success depends upon the success of our clients. Our clients can trust that the collective experience of our entire organization goes into every project to ensure the timely delivery of accurate and complete documents.

In order to build a talented team of engineers and technicians who are experts in the latest services, technologies, trends and software, we created an environment where existing expertise is strengthened and new areas of expertise are allowed to flourish.

Schmidt Consulting Group (SCG) is an involved and active member of the communities we serve. As an organization and as individuals, we reach out to local communities, educational institutions, and nonprofit organizations.

Everyone at Schmidt Consulting Group, Inc. is committed to these governing principles. We hope that you will let us demonstrate this commitment through our work for you.



**Electrical:** Todd A. Nicholson, P.E. is a Senior Vice President with SCG, Inc. and serves as our Electrical Principal.

He joined our team 14 years ago and this month marks his five year anniversary as a Partner of the firm.

Todd graduated from Mercer University in 1994 with his Bachelor of Science degree in Electrical Engineering. His thirteen years of experience includes computer simulation and design of lighting, power, fire alarm and telecommunications systems.

He has served as the Principal Electrical Engineer on numerous commercial, governmental and educational projects. Recent projects include the \$25 million Community Services Complex at Okaloosa-Walton College, the \$31.3 million School of Science and Engineering at the University of West Florida and the \$11 million Escambia County One Stop Facility.

Engineering is a common thread in the Nicholson household. His wife, Melissa is also an Engineer and is registered in the State of Florida as a Professional Civil Engineer. Todd is the proud parent of two: Jake (age 10) and Emily (age 7). Both children attend school in the Santa Rosa County School District where Todd has provided Electrical design services for numerous school projects. He serves as Cubmaster for Pack 404 and helps coach his son's soccer team.



**Structural:** Stuart C. Smith, P.E., S.I. is a Senior Vice President with SCG, Inc. and serves as our Structural Principal. He joined our team six years ago and this month marks his five year anniversary as a Partner of the firm.

Stuart graduated from the University of Arizona in 1986 with his Bachelor of Science degree in Civil Engineering, Structures. He is also a Registered Special Inspector in the State of Florida, as well as an International Code Council Building Inspector. His twenty-one years of experience include the structural design and inspection of numerous commercial, military, educational and industrial facilities.

Stuart's recent projects include the \$25 million Community Services Complex at Okaloosa-Walton College, the \$75 million Renovations and Additions at the Naval Construction Battalion Center in Gulfport, Mississippi and the \$42 million Ocean Sciences Laboratory located at Stennis Space Center, Mississippi.

Stuart doesn't fit the stereotype of your "typical engineer." In his few spare hours away from work, he races sailboats and teaches karate at Pensacola Junior College. He is a former World Class Competitor in karate and has competed in numerous world tournaments.

Stuart has designed renovations to a 70 foot/50 mph motor yacht. He also designed and contracted his home that overlooks the Gulf of Mexico. Construction on his home was completed four days prior to Hurricane Ivan's landfall. The house sustained no wind damage.

## Photo of the Month



**Michelle's a mommie:** Our own Michelle McAteer gave birth to Isabella Jane St. Clergy on May 5th at 12:01 p.m.

Isabella weighed 6 lbs. / 6.5 oz. and was 19 inches long. She is Michelle and her husband Clint's first child and already she is being spoiled rotten.....as every girl should be.

Michelle spends most of her day balancing Isabella on her lap while typing away at the computer from home, where she is juggling two jobs: designing and being a new parent.

**About Us:** Schmidt Consulting Group, Inc. was established in 1987 to provide Mechanical, Plumbing, Electrical, Communications, and Structural design services to a very diverse client base.

Headquartered in Pensacola, Florida, SCG currently employs branch offices in St. Petersburg, Florida and Daphne, Alabama to serve our clients more effectively and efficiently.

Our range of consulting services includes planning, design, the production of construction documents, supervision of public bidding, contract administration, and supervision and inspection during construction.

Our reputation for quality, responsiveness, and timeliness has been demonstrated through successful projects for many private, federal, state, and local entities.

Schmidt Consulting Group, Inc. has provided specialized design solutions for a variety of facility types including: Airports, Auditoriums, Broadcast Studios, Churches, Colleges and Universities, Correctional Facilities, Data Centers, K-12 Schools, Hospitals and Healthcare Facilities, Industrial Complexes, Laboratories, Libraries, Military Facilities, Multi-Family Residential Units, Municipal Facilities, Museums and Performing Art Centers, Office Buildings, Recreational Facilities, Sport Complexes, and Wastewater Treatment Plants.



### Locations:

**Pensacola Office:**  
139 East Government Street  
Pensacola, FL 32502  
P: 850-438-0050 | F: 850-432-8631

**St. Petersburg Office:**  
2111 Dr. Martin Luther King Jr. Street N.  
St. Petersburg, FL 33704  
P: 727-822-6286 | F: 727-822-6280

**Daphne Office:**  
29000 Highway 98 | Building A, Suite 201  
Daphne, AL 36526  
P: 251-625-3003 | F: 251-625-3020

[www.sdace.com](http://www.sdace.com)