



Northwest Florida State College - Student Services Building, see pg. 4 for details.

What's Inside:

| | |
|--------------------------------------|--------|
| Groundbreaking at NASP Corry Station | Page 2 |
| New Project Opportunities | Page 2 |
| Ohr-O'Keefe Museum of Art | Page 3 |
| Gulf Coast Community College - ATC | Page 3 |
| NWFSC Student Services Building | Page 4 |
| Who's New at SCG? | Page 4 |
| About Us | Page 5 |

Groundbreaking at NASP Corry Station

Groundbreaking ceremonies at NASP Corry Station took place on March 4, 2011, to mark the beginning of a \$14.3 million dollar new Bachelor Enlisted Quarters (BEQ). The new BEQ will house 332 students at Corry Stations Center for Information Dominance (CID) "A" School. The new quarters will house 166 bedrooms, an administrative area, laundry, lounge, vending and even include on-site amenities such as a gazebo, bicycle storage lockers, and a sand volleyball court.



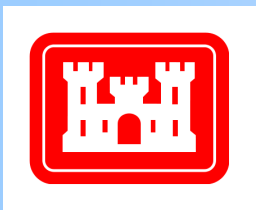
Schmidt Consulting Group is excited to join Eley Guild Hardy Architects and Anderson-Drace Joint Venture in the design and construction of this LEED Silver standard project. SCG will be providing structural, electrical, mechanical, plumbing, and telecommunication engineering services on this project.

The new BEQ is more than just a dorm to personnel at Corry Station, such as Capt. Gary Edwards, commanding officer of the CID. He says it "represents our country's willingness to invest" in their students, specifically those in the CID program whose mission doesn't rely on traditional means, but rather "cyber warfare." SCG is proud to be apart of honoring those men and women that make this project so significant.



Photo and rendering provided by Eley Guild Hardy Architects.

New Project Opportunities



In 2010, The Department of the Army's Mobile District Corps of Engineers announced an Indefinite Delivery Contract for Architect and Engineering services to support the Mobile District Military Construction Design Program. This solicitation was open to all businesses regardless of size and resulted in at least eight awards being made in a combination from Small-Business Set-Aside, Service-Disabled Veteran-Owned (SDVO) Set-Aside, HUB-Zone Set-Aside, and Unrestricted basis. The unrestricted basis was open to all interested firms regardless of their business size.

We are proud to announce that over the next five years, Schmidt Consulting Group, Inc. will be a part of the teams that were selected for the Small-Business Set-Aside award, the SDVO award, and the Unrestricted award. Many key players and partners make up the design-teams for these types of awards and we are very excited to continue to grow our professional relationships with both new and familiar Architectural and Engineering firms in the Southeastern United States.

Ohr-O'Keefe Museum of Art—Grand Opening



Photo courtesy of the Ohr-O'Keefe Museum of Art

After it's destruction in 2005, due to Hurricane Katrina, Phase I of the new four acre Museum of Art campus is now complete and open to the public. Schmidt Consulting Group, in conjunction with Gehrey Partners, LLP. and Eley Guild Hardy Architects contributed to the unique design of this 25,000 square foot campus.

The four campus buildings that are now open, include the Pleasant Reed Interpretive Center, Mississippi Sound Welcome Center, IP Casino Resort Spa Exhibitions Gallery, and the Gallery African America Art. These buildings are currently featuring *My House: The Pleasant Reed Story*; *The Native Guard: A Photographic History of Ship Island's African American Regiment*; *Helene Fielder: Balancing Act*; *The Cochran Collection: Andy Warhol—Series and Selected Prints*; *Jun Kaneko: Selected Work*; *Richmond Barthé: The Seeker*; and the *George Ohr: Selection from the Gulf Coast Collections* exhibitions.

Gulf Coast Community College - ATC

Schmidt Consulting Group in collaboration with Florida Architects is working hard toward the August 2012 deadline for Gulf Coast Community College's Advanced Technology Center (ATC). This AT Center will span over 100,000 square feet and serve as a mechanism for cooperation with economic development agencies and local workforce.

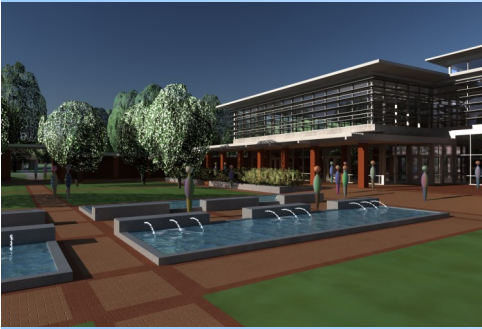
The center will house innovative programs such as an Information Technology / Computer Sciences center, Sustainable Building Construction Laboratory, Emerging Technologies Laboratory, and the Entrepreneurs Institute / Entrepreneur Development Business Lab.

This three-story structure will exhibit a living laboratory, or "green roof," which will be the largest of its kind in the state of Florida. The green roof will be used to study alternative energy featuring solar/photovoltaic cells and wind turbines. SCG is providing Mechanical, Electrical, Plumbing, Fire Protection, Structural, and Telecommunication consulting on this LEED® Gold Certified project and is well on their way to meeting next years deadline.



Rendering provided by Florida Architects

Northwest Florida State College - Student Services



Rendering provided by Sam Marshall Architects
Photos taken by Gene Schmidt, SCG.

Construction is moving along as the second story framing goes up for the new Student Services Building at Northwest Florida State College in Niceville, FL. Schmidt Consulting Group is providing structural, mechanical, plumbing, and telecommunication engineering designs on this \$25.5 million project. With the cooperative design assistance of Sam Marshall Architects, the new building will include one-stop student services for registration and financial aid needs, as well as the college's Women's Educational Resource Center, Career Resources Center, conferencing facilities, leadership institute, community and meeting spaces, and expanded food services facilities.

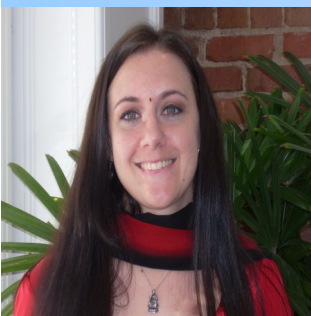
SCG project managers are excited to design the engineering components to the many attractive design features including the buildings' connected covered walks around the central courtyard, decorative fountains with recreational seating areas, an open mechanical room, and a beautiful glass front entry.

Who's New at Schmidt Consulting Group?



Schmidt Consulting Group is happy to welcome David H. Kreuser (pronounced Kroy-zer) to our Structural Team, David earned both his Bachelor's of Science and Master's of Science degrees from the University of Wisconsin in Milwaukee and is a registered professional engineer in the state of Wisconsin. David will also be pursuing his professional engineering registration for the state of Florida.

David will be working as a project manager for our structural department and comes to us with over 15-years of structural engineering experience, including work on large industrial buildings, office buildings, educational facilities, financial institutions, and residential construction. He has experience designing structures with nearly all types of building materials, such as structural steel, concrete, masonry, wood, precast concrete, aluminum, stainless steel, and light gauge steel just to name a few.



SCG is excited to welcome Tamara Romine back to our team.

Tamara returns to us from San Antonio, Texas where she worked as a Project Business Administrator for Innovative Technical Solutions, Inc., a national engineering and design-build firm.

Tamara graduated in 2005 with a Bachelor of Arts degree from The Ohio State University and also studied at the Friedriche-Wilhelms-Universität Bonn, in Bonn, Germany. She will be playing a very active role in our Marketing and Administrative efforts.

About Us:

Schmidt Consulting Group, Inc. (SCG) was established in 1987 to provide Mechanical, Plumbing, Electrical, Communications, and Structural design services to a very diverse client base.

SCG currently employs a branch in St. Petersburg, Florida in addition to our headquarters in Pensacola, Florida.

SCG's range of consulting services includes planning, design, production of construction documents, supervision of public bidding, contract administration, and supervision, commissioning, and inspection during construction.

Our reputation for quality, responsiveness, and timeliness has been demonstrated through successful projects for many private, federal, state, and local entities.

Schmidt Consulting Group, Inc. has provided specialized design solutions for a variety of facility types including: Airports, Auditoriums, Broadcast Studios, Churches, Colleges and Universities, Correctional Facilities, Data Centers, K-12 Schools, Hospitals and Healthcare Facilities, Industrial Complexes, Laboratories, Libraries, Military Facilities, Multi-Family Residential Units, Municipal Facilities, Museums and Performing Art Centers, Office Buildings, Recreational Facilities, Sport Complexes, Wastewater Treatment Plants, Fire Stations, and even Hyperbaric Chambers.

Locations:

Pensacola Office

40 S. Palafox Place, Suite 300

Pensacola, Florida 32502

P: 850.438.0050 | F: 850.432.8631

St. Petersburg Office Branch

2111 Dr. Martin Luther King Jr. St. N.

St. Petersburg, Florida 33704

P: 727.822.6266 | F: 727.822.6280

Visit us online at www.schmidtconsultinggroup.com!

