



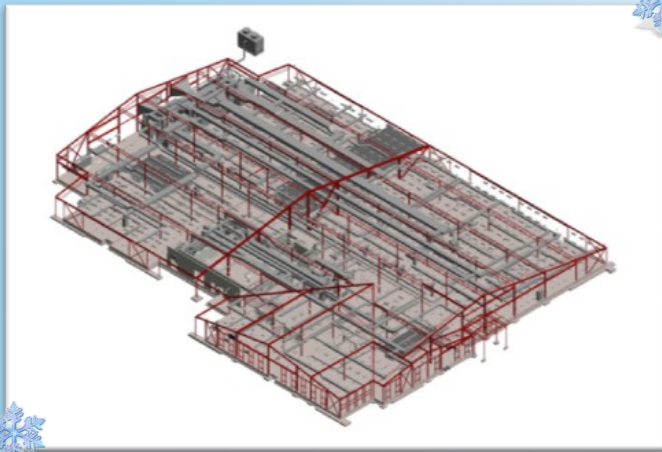
*Maneuver Battle Lab, Fort Benning, Georgia - see pg. 2 for details  
Rendering Provided by Eley Guild Hardy Architects*

## What's Inside:

---

<b>Maneuver Battle Lab</b>	<b>Page 2</b>
<b>Shaw Air Force Base</b>	<b>Page 2</b>
<b>Bahamas Habitat</b>	<b>Page 3</b>
<b>About Us</b>	<b>Page 4</b>

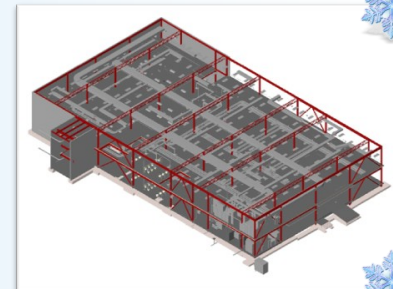
## Maneuver Battle Lab



The new Maneuver Battle lab at Fort Benning, Georgia is an 88,000 square foot, constructive environment simulation facility featuring state-of-the-art, 200-person classroom and multiple large and small simulation bays that can be networked and reconfigured. The new building will serve as the Training and Doctrine Command's premier facility for experimentation and has been designed to meet Anti-Terrorism/Force Protection needs. Schmidt Consulting Group, in coordination with Eley Guild Hardy Architects are providing Structural, Mechanical, Electrical, Plumbing, Fire Protection, Communications, and Security design services for this \$30 million project.

*Revit Renderings provided by Justin Stegall*

## Shaw Air Force Base



Construction is well under way for the new additions and alterations to the AFCENT Headquarters at Shaw Air Force Base in South Carolina. Schmidt Consulting Group is providing Structural, Mechanical, Plumbing, Fire Protection, Communications and Security engineering design services for this \$14.4 million, 49,880 square foot project. The new addition to the AFCENT Headquarters Building 1130 will unify AFCENT, the 9th Air Force, and four other units on base.

Designs for this project include a seismic force resisting system composed of steel concentrically braced frames and precast panels; geothermal wells and piping; fire detection/protection; and secure communication support systems. This project is designed to comply with all DOD Anti-Terrorism/Force Protection requirements. SCG in conjunction with Eley Guild Hardy Architects is seeking LEED Silver Certification for this project.

*Rendering Provided by Eley Guild Hardy Architects  
Site Photos and Revit provided by the SCG Structural Team*

# Bahamas Habitat



*“The purpose of life is to discover your gift. The meaning of life is to give your gift away.” - David Viscott*

The Haiti Relief Missions provide water purification systems and logistical support for isolated churches and orphanages throughout Haiti. Bahamas Methodist Habitat provides volunteer pilots and aircraft to deliver potable water filtration systems and medical supplies where they are needed most, bypassing the Customs bottlenecks that impede access.

The disaster relief mission in the Bahamas recently provided emergency food, water and temporary housing in the wake of Hurricane Irene to people on Eleuthera and Cat Island. Volunteer pilots, such as our own, Gene Schmidt delivered supplies where they were needed even before the Bahamian government organized a response.

Mr. Schmidt and Schmidt Consulting have been involved in supporting this organization for almost two years. This year, Bahamas Methodist Habitat is trying to raise \$300,000 for three very important programs. These are the Zion Children's Home, Haiti Relief Missions, and Bahamas Disaster Relief. The children's home is located on Current Island near Eleuthera and, when completed in February 2012 will provide housing and education for orphaned and abandoned children from throughout the Bahamas. This program is partially supported by the Bahamian government and will be operated by the women on Current Island.

This year, Mr. Schmidt and the staff at Schmidt Consulting have committed to raise \$20,000 by New Year's Day and they need your support to get there. Over the past couple years, Mr. Schmidt has seen the results of what even a small donation can make and knows how responsible and effective this organization is. In all the hustle of the holidays, sometimes we can forget how truly blessed we are as Americans. If you would like to join them in their support, you may donate online at <https://bmh.dojiggy.com/geneschmidt>.

Wishing you a very Merry Christmas, from your friends at Schmidt Consulting Group.



## About Us:

Schmidt Consulting Group, Inc. (SCG) was established in 1987 to provide Mechanical, Plumbing, Electrical, Communications, and Structural design services to a very diverse client base.

SCG currently employs a branch in St. Petersburg, Florida in a addition to our headquarters in Pensacola, Florida.

SCG's range of consulting services includes planning, design, production of construction documents, supervision of public bidding, contract administration, and supervision, commissioning, and inspection during construction.

Our reputation for quality, responsiveness, and timeliness has been demonstrated through successful projects for many private, federal, state, and local entities.

Schmidt Consulting Group, Inc. has provided specialized design solutions for a variety of facility types including: Airports, Auditoriums, Broadcast Studios, Churches, Colleges and Universities, Correctional Facilities, Data Centers, K-12 Schools, Hospitals and Healthcare Facilities, Industrial Complexes, Laboratories, Libraries, Military Facilities, Multi-Family Residential Units, Municipal Facilities, Museums and Performing Art Centers, Office Buildings, Recreational Facilities, Sport Complexes, Wastewater Treatment Plants, Fire Stations, and even Hyperbaric Chambers.

## Locations:

### Pensacola Office

40 S. Palafox Place, Suite 300

Pensacola, Florida 32502

P: 850.438.0050 | F: 850.432.8631

### St. Petersburg Office Branch

2210 Central Avenue, Suite 100

St. Petersburg, Florida 33713

P: 727.822.6266 | F: 727.822.6280



Visit us online at [www.schmidtconsultinggroup.com](http://www.schmidtconsultinggroup.com)!